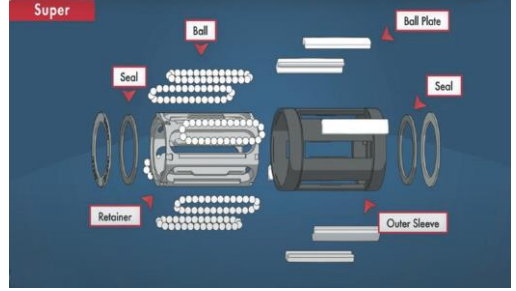
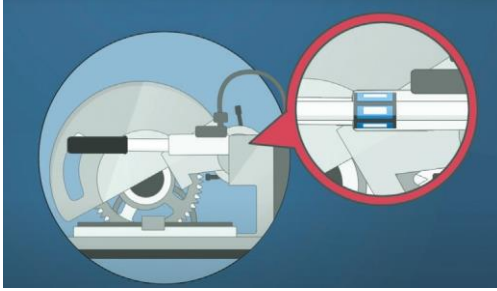
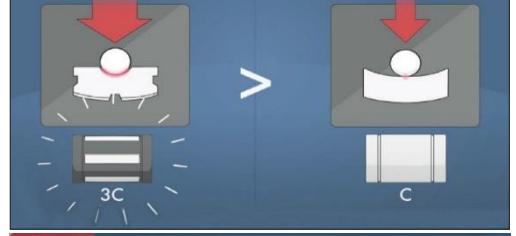
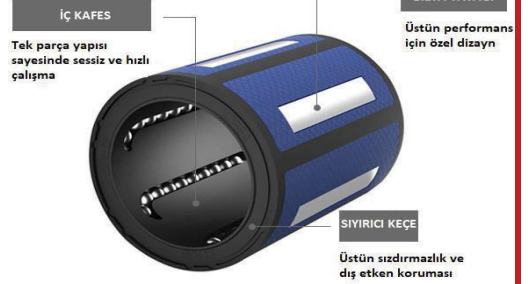
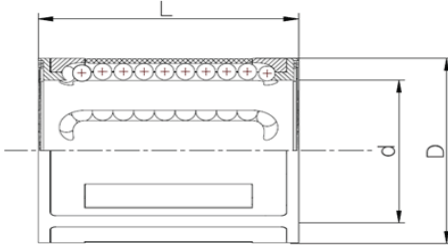


# FYC RULMAN



## CLB (KH) SERİSİ KOMPAKT LİNEER RULMANLAR



Parça No.		Ölçüler			Yük Kapasitesi (N)		FİYAT / AD.	
Sıyrıcı Keçesiz	Sıyrıcı Keçeli	d (mm)	D (mm)	L (mm) +/- 0.2	Dinamik (C)	Statik (C <sub>0</sub> )	Sıyrıcı Keçesiz	Sıyrıcı Keçeli
CLB 12	CLB 12 UU	12	19	28	480	385	*	*
CLB 14	CLB 14 UU	14	21	28	640	440	*	*
CLB 16	CLB 16 UU	16	24	30	925	625	*	*
CLB 20	CLB 20 UU	20	28	30	1165	790	*	*
CLB 25	CLB 25 UU	25	35	40	2100	1370	*	*
CLB 30	CLB 30 UU	30	40	50	2870	2100	*	*
CLB 40	CLB 40 UU	40	52	60	5200	4050	*	*
CLB 50	CLB 50 UU	50	62	70	6220	5880	*	*

SAMICK NO	INA NO	SKF NO	STAR NO	SAMICK NO	INA NO	SKF NO	STAR NO
CLB 12	KH 1228	LBBR 12	0658-012-00	CLB 12 UU	KH 1228 PP	LBBR 12-2LS	0658-212-40
CLB 14	KH 1428	LBBR 14	0658-014-00	CLB 14 UU	KH 1428 PP	LBBR 14-2LS	0658-214-40
CLB 16	KH 1630	LBBR 16	0658-016-00	CLB 16 UU	KH 1630 PP	LBBR 16-2LS	0658-216-40
CLB 20	KH 2030	LBBR 20	0658-020-00	CLB 20 UU	KH 2030 PP	LBBR 20-2LS	0658-220-40
CLB 25	KH 2540	LBBR 25	0658-025-00	CLB 25 UU	KH 2540 PP	LBBR 25-2LS	0658-225-40
CLB 30	KH 3050	LBBR 30	0658-030-00	CLB 30 UU	KH 3050 PP	LBBR 30-2LS	0658-230-40



### FİYAT VE STOK SORUNUZ

PARÇA NO	İÇ	DIŞ	EN	FİYAT
LME 5 UU	5	12	22	*
LME 8 UU	8	16	25	*
LME 12 UU	12	22	32	*
LME 16 UU	16	26	36	*
LME 20 UU	20	32	45	*
LME 25 UU	25	40	58	*
LME 30 UU	30	47	68	*
LME 40 UU	40	62	80	*
LME 50 UU	50	75	100	*
LME 60 UU	60	90	125	*

PARÇA NO	İÇ	DIŞ	EN	FİYAT
LM 6 UU	6	12	19	*
LM 8 UU	8	15	24	*
LM 10 UU	10	19	29	*
LM 12 UU	12	21	30	*
LM 13 UU	13	23	32	*
LM 16 UU	16	28	37	*
LM 20 UU	20	32	42	*
LM 25 UU	25	40	59	*
LM 30 UU	30	45	64	*
LM 35 UU	35	52	70	*
LM 40 UU	40	60	80	*
LM 50 UU	50	80	100	*
LM 60 UU	60	90	110	*
LM 80 UU	80	120	140	*



PARÇA NO	İÇ	DIŞ	EN	FİYAT
LME 12 UUOP	12	22	32	*
LME 16 UUOP	16	26	36	*
LME 20 UUOP	20	32	45	*
LME 25 UUOP	25	40	58	*
LME 30 UUOP	30	47	68	*
LME 40 UUOP	40	62	80	*
LME 50 UUOP	50	75	100	*
LME 60 UUOP	60	90	125	*

PARÇA NO	İÇ	DIŞ	EN	FİYAT
LM 16 UU OP	16	28	37	*
LM 20 UU OP	20	32	42	*
LM 25 UU OP	25	40	59	*
LM 30 UU OP	30	45	64	*
LM 40 UU OP	40	60	80	*
LM 50 UU OP	50	80	100	*
LM 60 UU OP	60	90	125	*



PARÇA NO	İÇ	DIŞ	EN	FİYAT
LME 5 UUAJ	5	12	22	*
LME 8 UUAJ	8	22	25	*
LME 12 UUAJ	12	22	32	*
LME 16 UUAJ	16	26	36	*
LME 20 UUAJ	20	32	45	*
LME 25 UUAJ	25	40	58	*
LME 30 UUAJ	30	47	68	*
LME 40 UUAJ	40	62	80	*
LME 50 UUAJ	50	75	100	*
LME 60 UUAJ	60	90	125	*

PARÇA NO	İÇ	DIŞ	EN	FİYAT
LME 08 LUU	8	16	45	*
LME 12 LUU	12	22	57	*
LME 16 LUU	16	26	70	*
LME 20 LUU	20	32	80	*
LME 25 LUU	25	40	112	*
LME 30 LUU	30	47	123	*
LME 40 LUU	40	62	154	*
LME 50 LUU	50	75	192	*
LME 60 LUU	60	90	211	*

## FİYAT VE STOK SORUNUZ

"SUPERBALL" STANDART RULMANLARDAN 3 KAT DAHA FAZLA YÜK, 27 KAT DAHA FAZLA ÖMÜR.



TİP	İÇ	DIŞ	EN	Kapalı	Açık-OP
LMES 10 UU	10	19	29	*	*
LMES 12 UU	12	22	32	*	*
LMES 16 UU	16	26	36	*	*
LMES 20 UU	20	32	45	*	*
LMES 25 UU	25	40	58	*	*
LMES 30 UU	30	47	68	*	*
LMES 40 UU	40	62	80	*	*
LMES 50 UU	50	75	100	*	*

TİP	İÇ	DIŞ	EN	Kapalı	Açık-OP
LMBS 06 UU	9,5	15,8	22,2	*	*
LMBS 08 UU	12,7	22,2	31,7	*	*
LMBS 10 UU	15,8	25,8	38,1	*	*
LMBS 12 UU	19,0	31,7	41,2	*	*
LMBS 16 UU	25,4	39,6	57,1	*	*
LMBS 20 UU	31,7	50,8	66,6	*	*
LMBS 24 UU	38,1	60,3	76,2	*	*
LMBS 32 UU	50,8	76,2	101,6	*	*



PARÇA NO	İÇ	DIŞ	BOY	FİYAT
LMEF 08 UU	8	16	25	*
LMEF 12 UU	12	22	32	*
LMEF 16 UU	16	26	36	*
LMEF 20 UU	20	32	45	*
LMEF 25 UU	25	40	58	*
LMEF 30 UU	30	47	68	*
LMEF 40 UU	40	62	80	*
LMEF 50 UU	50	75	100	*
LMEF 60 UU	60	90	125	*



PARÇA NO	İÇ	DIŞ	BOY	FİYAT
LMEK 08 UU	8	16	25	*
LMEK 12 UU	12	22	32	*
LMEK 16 UU	16	26	36	*
LMEK 20 UU	20	32	45	*
LMEK 25 UU	25	40	58	*
LMEK 30 UU	30	47	68	*
LMEK 40 UU	40	62	80	*
LMEK 50 UU	50	75	100	*
LMEK 60 UU	60	90	125	*



PARÇA NO	İÇ	DIŞ	BOY	FİYAT
LMEF 16 LUU	16	26	70	*
LMEF 20 LUU	20	32	80	*
LMEF 25 LUU	25	40	112	*
LMEF 30 LUU	30	47	123	*
LMEF 40 LUU	40	62	154	*
LMEF 50 LUU	50	75	192	*
LMEF 60 LUU	60	90	211	*



PARÇA NO	İÇ	DIŞ	BOY	FİYAT
LMEK 16 LUU	16	26	70	*
LMEK 20 LUU	20	32	80	*
LMEK 25 LUU	25	40	112	*
LMEK 30 LUU	30	47	123	*
LMEK 40 LUU	40	62	154	*
LMEK 50 LUU	50	75	192	*
LMEK 60 LUU	60	90	211	*



PARÇA NO	İÇ	DIŞ	BOY	FİYAT
LMK 12 UU	12	21	30	*
LMK 16 UU	16	28	37	*
LMK 20 UU	20	32	42	*
LMK 25 UU	25	40	59	*
LMK 30 UU	30	45	64	*
LMK 40 UU	40	60	80	*
LMK 60 UU	60	90	110	*
LMK 80 UU	80	120	140	*



PARÇA NO	İÇ	DIŞ	BOY	FİYAT
LMK 10 LUU	10	19	55	*
LMK 12 LUU	12	21	57	*
LMK 16 LUU	16	28	70	*
LMK 20 LUU	20	32	80	*
LMK 25 LUU	25	40	112	*
LMK 30 LUU	30	45	123	*
LMK 40 LUU	40	60	154	*



PARÇA NO	İÇ	DIŞ	BOY	FİYAT
LMH 12 UU	12	21	30	*
LMH 16 UU	16	28	37	*
LMH 20 UU	20	32	42	*
LMH 25 UU	25	40	59	*
LMH 30 UU	30	45	64	*



PARÇA NO	İÇ	DIŞ	BOY	FİYAT
LMH 12 LUU	12	21	57	*
LMH 16 LUU	16	28	70	*
LMH 20 LUU	20	32	80	*
LMH 25 LUU	25	40	112	*
LMH 30 LUU	30	45	123	*

## FİYAT VE STOK SORUNUZ

PARÇA NO.	FİYAT/AD.	W ( EN )	L ( BOY )	H ( YÜKSEKLİK )
SCE 08 UU	*	34	30	22
SCE 12 UU	*	44	39	30
SCE 16 UU	*	50	44	38.5
SCE 20 UU	*	54	50	41
SCE 25 UU	*	76	67	51.5
SCE 30 UU	*	78	72	59.5
SCE 40 UU	*	102	90	78
SCE 50 UU	*	122	110	102



PARÇA NO.	FİYAT/AD.	W ( EN )	L ( BOY )	H ( YÜKSEKLİK )
SCE 8 VUU	*	34	15.4	22
SCE 12 VUU	*	44	20.5	30
SCE 16 VUU	*	50	23.5	38.5
SCE 20 VUU	*	54	27.4	41
SCE 25 VUU	*	76	37.4	51.5
SCE 30 VUU	*	78	40.9	59.5
SCE 40 VUU	*	102	56.4	78
SCE 50 VUU	*	122	68.9	102



PARÇA NO.	FİYAT/AD.	W ( EN )	L ( BOY )	H ( YÜKSEKLİK )
SCE 12 WUU	*	44	77	30
SCE 16 WUU	*	50	89	38.5
SCE 20 WUU	*	54	106	41
SCE 25 WUU	*	76	136	51.5
SCE 30 WUU	*	78	154	59.5
SCE 40 WUU	*	102	180	78
SCE 50 WUU	*	122	230	102

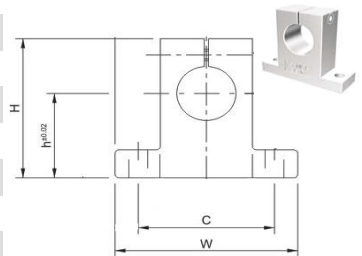


PARÇA NO.	FİYAT/AD.	W ( EN )	L ( BOY )	H ( YÜKSEKLİK )
SCJ 10 UU	*	40	35	26
SCJ 12 UU	*	44	39	30
SCJ 16 UU	*	50	44	38.5
SCJ 20 UU	*	54	50	41
SCJ 25 UU	*	76	67	51.5
SCJ 30 UU	*	78	72	59.5
SCJ 35 UU	*	90	80	68
SCJ 40 UU	*	102	90	78
SCJ 50 UU	*	122	110	102



## MİL UÇ BAĞLANTILARI

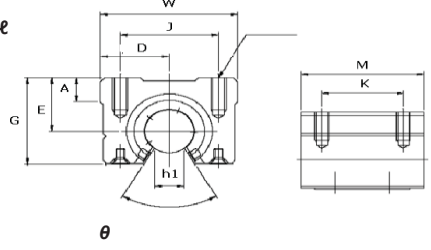
PARÇA NO	FİYAT/AD.	h	H	C	W
SK 08	*	20	32.8	32	42
SK 12	*	23	38	32	42
SK 13	*	23	38	32	42
SK 16	*	27	44	38	48
SK 20	*	31	51	45	60
SK 25	*	35	60	56	70
SK 30	*	42	70	64	84
SK 40	*	60	96	90	114
SK 50	*	70	120	100	126



## SBR

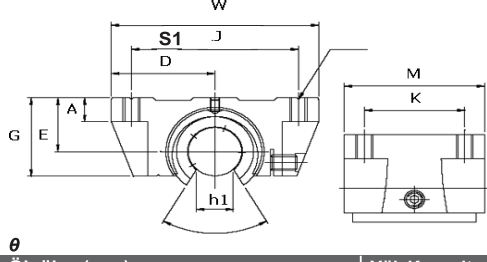


S1xℓ



PARÇA NO	FİYAT	Ölçüler (mm)										Yük Kapasitesi(N)		
		D	W	G	θ	A	M	S1xℓ	h1	E	J	K	Dinamik	Statik
<b>SBR 16 UU</b>	*	22.5	45	33	80°	9	45	M5x12	11	20	32	30	770	1170
<b>SBR 20 UU</b>	*	24	48	39	60°	11	50	M6x12	11	23	35	35	860	1370
<b>SBR 25 UU</b>	*	30	60	47	50°	14	65	M6x12	12	27	40	40	980	1560
<b>SBR 30 UU</b>	*	35	70	56	50°	15	70	M8x18	15	33	50	50	1560	2740
<b>SBR 40 UU</b>	*	45	90	72	50°	20	90	M10x20	20	42	65	65	2150	4010
<b>SBR 50 UU</b>	*	60	120	91	50°	25	110	M10x20	25	53	94	80	3820	7930

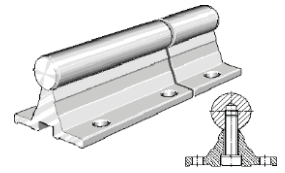
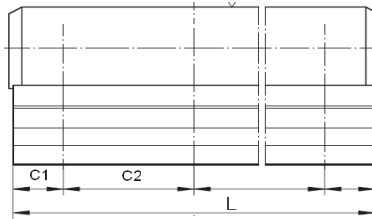
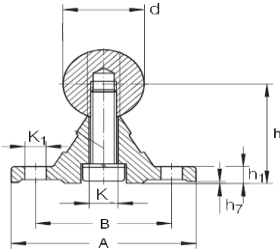
## TBR



PARÇA NO	FİYAT	Ölçüler (mm)										Yük Kapasitesi(N)		
		D	W	G	θ	A	M	S1	h1	E	J	K	Dinamik	Statik
<b>TBR 16 UU</b>	*	31	62	26	80°	8	42	M5	11	18	50	30	392	490
<b>TBR 20 UU</b>	*	34	68	31	60°	10	51	M6	11	21	54	37	784	1176
<b>TBR 25 UU</b>	*	41	82	41	50°	12	65	M8	12	28	65	50	1568	2352
<b>TBR 30 UU</b>	*	45.5	91	48	50°	12	75	M8	15	34	75	60	1764	2940

## SAC

## ALT DESTEK + MİL KOMPLE



PARÇA NO	FİYAT/MT.	Ölçüler (mm)										
		h	B	A	d	h1	K1	K	h7	C1	C2	L <sub>max</sub>
<b>SAC 16-1000</b>	*	26	33	45	16	5	5.5	5.5	0.2	50	100	6000
<b>SAC 20-1000</b>	*	32	37	52	20	6	6.6	6.6	0.2	50	100	6000
<b>SAC 25-1000</b>	*	36	42	57	25	6	6.6	9	0.3	60	120	6000
<b>SAC 30-1000</b>	*	42	51	69	30	7	9	11	0.3	75	150	6000
<b>SAC 40-1000</b>	*	50	55	73	40	8	9	11	0.3	100	200	6000
<b>SAC 50-1000</b>	*	55	55	73	50	8	9	11	0.3	100	200	6000

# FYC



## LİNEER KIZAK VE ARABALAR

PARÇA NO	Ray dahil Komple Yükseklik	Araba Genişlik mm	Araba Uzunluk mm	Delik Merkezi En/ Boy	Schneeberger Muadil No.	ARABA FİYAT/AD.	RAY FİYAT / MT.
<b>GENİŞ ARABA</b>							
BRA 15	24	47	58.5	38x30	BMA	*	*
BRA 20	30	63	74	53x40	BMA	*	*
BRA 25	36	70	82	57x45	BMA	*	*
BRA 30	42	90	95	72x52	BMA	*	*
BRA 35	48	100	112	82x62	BMA	*	*
BRA 45	60	120	135	100x80	BMA	*	*
<b>DAR ARABA</b>							
BRC 15	28	34	60	26x26	BMC	*	*
BRC 20	30	44	74	32x36	BMC	*	*
BRC 25	40	48	82	35x35	BMC	*	*
BRC 30	45	60	95	40x40	BMC	*	*
BRC 35	55	70	112	50x50	BMC	*	*
BRC 45	70	86	135	60x60	BMC	*	*
<b>GENİŞ UZUN ARABA</b>							
BRB 20	30	63	92	53x40	BMB	*	*
BRB 25	36	70	104	57x45	BMB	*	*
BRB 30	42	90	118	72x52	BMB	*	*
BRB 35	48	100	136	82x62	BMB	*	*
BRB 45	60	120	164	100x80	BMB	*	*
<b>DAR UZUN ARABA</b>							
BRD 20	30	44	92	32x50	BMD	*	*
BRD 25	40	48	104	35x50	BMD	*	*
BRD 30	45	60	118	40x60	BMD	*	*
BRD 35	55	70	136	50x72	BMD	*	*
BRD 45	70	86	167	60x80	BMD	*	*
<b>DAR ALÇAK ARABA</b>							
BRF 15	24	34	60	26x26	BMF	*	*
BRF 25	36	48	82	35x35	BMF	*	*
BRF 30	42	60	96	40x40	BMF	*	*
BRF 35	48	70	113	50x50	BMF	*	*

**FİYAT VE STOK SORUNUZ**

# FYC



## METAL KORUMA KAPAKLI LİNEER ARABA VE KIZAKLAR

PARÇA NO	Ray dahil Komple Yükseklik	Araba Genişlik mm	Araba Uzunluk mm	Delik Merkezi En/ Boy	Schneeberger Muadil No.	ARABA FİYAT/AD.	RAY FİYAT / MT.
<b>GENİŞ ARABA</b>							
BRA 15	24	47	58.5	38x30	BMA	*	*
BRA 20	30	63	74	53x40	BMA	*	*
BRA 25	36	70	82	57x45	BMA	*	*
BRA 30	42	90	95	72x52	BMA	*	*
BRA 35	48	100	112	82x62	BMA	*	*
BRA 45	60	120	135	100x80	BMA	*	*
<b>DAR ARABA</b>							
BRC 15	28	34	60	26x26	BMC	*	*
BRC 20	30	44	74	32x36	BMC	*	*
BRC 25	40	48	82	35x35	BMC	*	*
BRC 30	45	60	95	40x40	BMC	*	*
BRC 35	55	70	112	50x50	BMC	*	*
BRC 45	70	86	135	60x60	BMC	*	*
<b>GENİŞ UZUN ARABA</b>							
BRB 20	30	63	92	53x40	BMB	*	*
BRB 25	36	70	104	57x45	BMB	*	*
BRB 30	42	90	118	72x52	BMB	*	*
BRB 35	48	100	136	82x62	BMB	*	*
BRB 45	60	120	164	100x80	BMB	*	*
<b>DAR UZUN ARABA</b>							
BRD 20	30	44	92	32x50	BMD	*	*
BRD 25	40	48	104	35x50	BMD	*	*
BRD 30	45	60	118	40x60	BMD	*	*
BRD 35	55	70	136	50x72	BMD	*	*
BRD 45	70	86	167	60x80	BMD	*	*

## FİYAT VE STOK SORUNUZ



## MASURALI LİNEER KIZAK VE ARABALAR

PARÇA NO	Ray dahil Komple Yükseklik	Araba Genişlik mm	Araba Uzunluk mm	Delik Merkezi En/ Boy	Schneeberger Muadil No.	ARABA FİYAT/AD.	RAY FİYAT / MT.
MBA 25	36	70	98	57x45	MRA	*	*
MBA 35	48	100	124	82x62	MRA	*	*
MBA 45	60	120	153	100x80	MRA	*	*
MBC 25	40	48	98	35x50	MRC	*	*
MBC 35	55	70	124	50x72	MRC	*	*
MBC 45	70	86	153	60x80	MRC	*	*
MBB 45	60	120	187	100x80	MRB	*	*

## FİYAT VE STOK SORUNUZ

## FIYAT VE STOK SORUNUZ

Mafsal PHS...A Ve PHS...L					
Ürün Kodu	Delik Çapı	Hatvesi	Ürün Boyu	Kafa Çapı	Fiyat
PHS 05 A	5	M5X0,8	36	18	*
PHS 06 A	6	M6X1	45	20	*
PHS 08 A	8	M8X1,25	48	24	*
PHS 10 A	10	M10X1,5	57	28	*
PHS 12 A	12	M12X1,75	66	32	*
PHS 14 A	14	M14X2	75	36	*
PHS 16 A	16	M16X2	84	40	*
PHS 18 A	18	M18X1,5	94	46	*
PHS 20 A	20	M20X1,5	102	50	*
PHS 22 A	22	M22X1,5	111	54	*
PHS 25 A	25	M25X2	124	60	*
PHS 30 A	30	M30X2	145	70	*
PHS 05 L	5	M5X0,8	36	18	*
PHS 06 L	6	M6X1	45	20	*
PHS 08 L	8	M8X1,25	48	24	*
PHS 10 L	10	M10X1,5	57	28	*
PHS 12 L	12	M12X1,75	66	32	*
PHS 14 L	14	M14X2	75	36	*
PHS 16 L	16	M16X2	84	40	*
PHS 18 L	18	M18X1,5	94	46	*
PHS 20 L	20	M20X1,5	102	50	*
PHS 22 L	22	M22X1,5	111	54	*
PHS 25 L	25	M25X2	124	60	*
PHS 30 L	30	M30X2	145	70	*



## Mafsal POS...A ve POS...L

Ürün Kodu	Delik Çapı	Hatvesi	Ürün Boyu	Kafa Çapı	Fiyat
POS 05 A	5	M5X0,8	42	18	*
POS 06 A	6	M6X1	46	20	*
POS 08 A	8	M8X1,25	54	24	*
POS 10 A	10	M10X1,5	62	28	*
POS 12 A	12	M12X1,75	70	32	*
POS 14 A	14	M14X2	77	36	*
POS 16 A	16	M16X2	86	40	*
POS 18 A	18	M18X1,5	95	46	*
POS 20 A	20	M20X1,5	103	50	*
POS 22 A	22	M22X1,5	111	54	*
POS 25 A	25	M25X2	124	60	*
POS 30 A	30	M30X2	145	70	*
POS 05 L	5	M5X0,8	42	18	*
POS 06 L	6	M6X1	46	20	*
POS 08 L	8	M8X1,25	54	24	*
POS 10 L	10	M10X1,5	62	28	*
POS 12 L	12	M12X1,75	70	32	*
POS 14 L	14	M14X2	77	36	*
POS 16 L	16	M16X2	86	40	*
POS 18 L	18	M18X1,5	95	46	*
POS 20 L	20	M20X1,5	103	50	*
POS 22 L	22	M22X1,5	111	54	*
POS 25 L	25	M25X2	124	60	*
POS 30 L	30	M30X2	145	70	*

\*

**FİYAT VE STOK SORUNUZ**

GD ve G Serisi Mafsallar				
Ürün Kodu	Mil Çapı	Uzunluk	Dış Çapı	Fiyat
01 GD	6	56	16	*
02 GD	8	62	16	*
03 GD	10	74	22	*
04 GD	12	86	25	*
05 GD	14	96	28	*
1 GD	16	104	32	*
2 GD	18	114	36	*
3 GD	20	128	42	*
4 GD	22	145	45	*
5 GD	25	163	50	*
6 GD	30	190	58	*
8 GD	40	245	80	*
01 G	6	34	16	*
02 G	8	40	16	*
03 G	10	48	22	*
04 G	12	56	25	*
05 G	14	60	28	*
1 G	16	68	32	*
2 G	18	74	36	*
3 G	20	82	42	*
4 G	22	95	45	*
5 G	25	108	50	*
6 G	30	122	58	*
8 G	40	160	80	*

## FİYAT VE STOK SORUNUZ

İnce Diş Mafsal		PHS...A/L ve	POS...A/L		
Ürün Kodu	Delik Çapı	Hatvesi	Ürün Boyu	Kafa Çapı	Fiyat
PHS 10 BA	10	1,25	57	28	*
PHS 12 BA	12	1,25	66	32	*
PHS 14 BA	14	1,5	66	36	*
PHS 16 BA	16	1,5	84	40	*
PHS 10 BL	10	1,25	57	28	*
PHS 12 BL	12	1,25	66	32	*
PHS 14 BL	14	1,5	66	36	*
PHS 16 BL	16	1,5	84	40	*
POS 10 BA	10	1,25	57	28	*
POS 12 BA	12	1,25	66	32	*
POS 14 BA	14	1,5	66	36	*
POS 16 BA	16	1,5	84	40	*
POS 10 BL	10	1,25	57	28	*
POS 12 BL	12	1,25	66	32	*
POS 14 BL	14	1,5	66	36	*
POS 16 BL	16	1,5	84	40	*